

ARBORICULTURAL  
ASSOCIATION  
**CONFERENCE**  
— WARWICK 2024 —



University of Warwick, Warwickshire, **9<sup>th</sup>-11<sup>th</sup> September 2024**

## CONFERENCE PROGRAMME

# THE UK'S BIGGEST ARBORICULTURE CONFERENCE

Delegate Name

Join the conversation

*#ArbConference*

**TREES.ORG.UK/CONFERENCE24**



Scan to  
download



Arboricultural  
ASSOCIATION

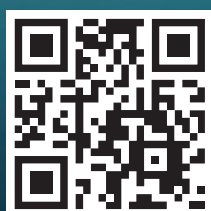
The home of tree care

# WEDNESDAY WEBINARS

## 2024/25 SERIES

Date	Webinar title	Speakers
30 Oct 24	<b>British bats</b>	Jim Mullholland
06 Nov 24	<b>Thinking Arbs</b> with Ted Green and friends	Ted Green and Jill Butler
13 Nov 24	<b>Practical tree management</b> wisdom from a lifetime of pruning trees and acting as an expert witness	Jeremy Barrell
20 Nov 24	<b>Empire forestry in colonial Jamaica:</b> The absence and agency of the Ackee tree	Heather Craddock
27 Nov 24	<b>The SCATTER project   Saving the Darwin Oak</b>	Cecilia Chavana-Bryant and Rob McBride
04 Dec 24	<b>Meet the Urban Forestry Innovators</b> from "The Nature of Our Cities"   The decay of the wood-wide web?	Nadina Galle and Justine Karst
11 Dec 24	<b>Seasonwatch</b> – monitoring seasonal changes in trees in India   <b>The Spectral Forest:</b> Trees, cures and sylvan thinking in Amazonia	Sayee Girdari and Lewis Daly
18 Dec 24	<b>Scotland's arboreal heritage:</b> History, ecology and culture through treescapes. <b>Part I</b>	Chris Knapman
08 Jan 25	<b>Scotland's arboreal heritage:</b> History, ecology and culture through treescapes. <b>Part II</b>	Chris Knapman
15 Jan 25	<b>Wild orchards in the American Northeast  </b> <b>Urban orchards and nature based solutions in</b> <b>Zagreb, Croatia</b>	Maria Kennedy and Iva Bedenko
22 Jan 25	<b>Fluid dynamics – tree and wind interactions</b>	Franziska Hunger and Jon Hartill
29 Jan 25	<b>Biomechanics and tree failure</b>	Gerard Passola
05 Feb 25	<b>Trunk decay</b> – The state of our knowledge	Lynne Boddy

Scan to keep  
up-to-date



# Welcome

## to the 2024

# Arboricultural Association

## Conference

# here at the

# University of Warwick

**John Parker**, Chief Executive Officer, Arboricultural Association



**W**elcome to Warwick University for the Arboricultural Association's 57th Annual Conference, where we will be celebrating 60 years of the Association. We are pleased to be returning to this great venue for what promises to be an informative and enjoyable few days. Our programme kicks off on Sunday with a morphophysiology walk around War Memorial Park with Stefania Gasperini and Giovanni Morelli, followed by an opportunity to watch the UK&I Masters Final tree climbing competitors in action in the park.

On Monday and Tuesday we have a superb lineup of speakers covering a wide range of topics in the main conference theatre, as well as two panel sessions and a selection of workshops after which we have the usual programme of drinks receptions, meals and plenty of time and space for socialising. On Wednesday, our conference field trip is a guided tour of the Joseph Paxton-designed

London Road Cemetery in Coventry, home to some unique features and, of course, many interesting trees.

We hope you enjoy the conference this year and take the opportunity to develop your knowledge, share ideas and experiences and to catch up with friends and colleagues. I would like to say thank you to our volunteers,

to our amazing staff team and to all of our delegates – it is great that you can join us. And thank you to our exhibitors who support these events – please do go and visit them over the next few days. Enjoy yourselves, and I hope to see many of you around campus.

**I hope you enjoy Warwick 2024.**

## CONFERENCE PRESENTATIONS

Conference presentations will, where possible, be recorded and made available to delegates as soon as possible after the event.

An archive of conference presentations from 2015 to 2023 is available on the Arboricultural Association website. Conference 2024 will also be available to buy on-demand.

[www.trees.org.uk/Training](http://www.trees.org.uk/Training)

## REGISTERING FOR ISA CEU CREDITS



ISA members attending Conference 2024 can receive 8 credits for Monday, 8 for Tuesday and 5 for Wednesday.

To register for CEUs you must sign in at the lecture theatre on Monday and Tuesday, and the coach or at London Road Cemetery on Wednesday.

## YOUR PLANTABLE SEED PAPER BADGE

All conference delegate badges have been printed on plantable paper embedded with seeds.



Scan this QR code to find out how you can plant your biodegradable badge to grow wildflowers!

1. Soak in water for 24–48 hours.
2. Transfer to a pot with compost, water regularly.
3. Keep in a warm place with natural light.
4. **Enjoy your blooms!**



2025

## Arboricultural Association Conference 2025

### 14<sup>th</sup>–17<sup>th</sup> September 2025

The 58th Arboricultural Association Conference will take place at the University of Warwick from Sunday 14<sup>th</sup> – Wednesday 17<sup>th</sup> September.

# DELEGATE INFORMATION

## The Oculus, University of Warwick CV4 7SH

Here's everything you need to know about finding your way around the campus and all the particulars. On the following pages, you'll find a campus map and a plan of the trade exhibition stands. More comprehensive details can be found in your joining instructions.

### Car Parking arrangements



To get free parking, all drivers **must** register their car using the QR code:

1. Fill in "Personal Details", check the "Booking Summary" is correct,
2. Add the promotional code: **ADOYW** (this promotional code will then reduce the price to £0.00)
3. Click "Book now"

If you forgot to register before you arrived, you can still do so using the above QR code. If you fail to register before you leave, however, you will be charged and this is non-refundable.

### Accommodation

Residential delegates are staying in the **Arthur Vick** and **Jack Martin Halls of Residence**. The halls are a 5-minute walk away from Oculus and 8 minutes from the **Rootes Building**, where breakfast and evening socials will be held.

The en-suite bedrooms are single occupancy only and have a small double bed, bed linen towels, wrapped soap, tea and coffee making facilities, a fridge (in the shared kitchen area) and free Wi-Fi. An iron and ironing board are available on request. Bedrooms do not have televisions or telephones.

#### Accommodation Check In/Out:

You will be provided with a key card which will give you access to your bedroom and entry door to the accommodation block.

- Bedroom keys will be available to collect from **15:00 to 21:45** at **Senate House**.
- Bedrooms are to be vacated by **09:30** on your day of departure. Luggage and belongings should be removed by that time.

- On the day of departure, keys can be left at Rootes Restaurant or one of the boxes situated in the entrance hall of your accommodation block. You can also drop your card keys at our registration desk in the Oculus.

Emergency contact for accommodation after 21:45 is [cvreception@warwick.ac.uk](mailto:cvreception@warwick.ac.uk) or **02476 528910**.

#### Left Luggage:

There is limited space for left luggage, so this is reserved for those travelling by public transport. Please see the Association Registration desk for this facility. Delegates attending Wednesday's field trip can leave their luggage in the Learning Grid in Rootes on Wednesday morning, then collect after lunch.

### Conference Registration

Registration for the Conference will take place in the main foyer of the Oculus, at the Association Registration Desk. All delegates must sign in here and collect their conference badge, before attending any sessions.

- **Sunday:** 14:00 – 18:00 only
- **Monday:** from 07:45
- **Tuesday:** from 07:45 (if not already registered)

Presentations will take place in the **Main Lecture Theatre** upstairs in the Oculus. Delegates will have a choice of workshops to attend each afternoon and the registration for these will be on-the-day only.

### Wednesday Field Trip:

#### London Road Cemetery:

Joining Instructions are available from the Registration desk.

If you are attending Wednesday's field trip, the coach will be boarding at the **University's**

### Coach Park at 09:45, and departing at 10:00.

Please make yourself known to the staff member at the coaches to register your attendance.

Coach delegates will return to the University of Warwick at **13:00**. If you are returning to Warwick for lunch, please ensure that you have booked your University parking until 3pm on Wednesday. If you haven't, you must re-register to avoid being charged.

### Trade Exhibitions

The Trade Exhibitions will take place throughout Monday & Tuesday in the **main foyer of the Oculus** building, where refreshments, buffet lunch and Monday's Exhibitors' wine reception will be served.

### Internet Access on Campus

If you wish to access the Wi-Fi, you will need to select: **Warwick Guest** from the list of available networks. You will be directed to the BT Wi-Fi landing page. Click Get Online to connect. The same free network will work across campus.

### Food and Drink

Sunday and Tuesday dinner and all breakfasts will be provided at the restaurant in the Rootes Building. Service times are as follows:

- **Evening Dinner:** Sunday and Tuesday: 18:30 – 20:00
- **Breakfast:** Monday, Tuesday, Wednesday: 07:00 – 09:00

**All lunches, daytime refreshments and the wine reception on Monday evening** will be served in the main foyer of the Oculus building. For times, please refer to the conference programme.

- **Monday Dinner:** Food will be served in the **Panorama Room** in the Rootes building at 20:00. The Panorama bar will be open from 17:00 and close at 23:00.

**If you have any special dietary requirements, please ensure that our events team have been notified.**

#### Bars

Fusion Sports Bar is located in the Rootes Building, next to the restaurant and is open until 01:00 serving a range of local beers,

Guinness, cider and spirits, this will be open until 01:00. **The bar is cashless**, so don't forget your cards!

Please display your conference badge to gain access to the food and drinks that you have booked.

## Disability Services:

The Oculus and Rootes building have level

entries and lift access to first floor restaurant and meeting spaces.

The auditorium is fitted with a hearing loop.

## Onsite contact:

If you need any assistance throughout the event, please go to the Association's Registration desk, or speak to a member of

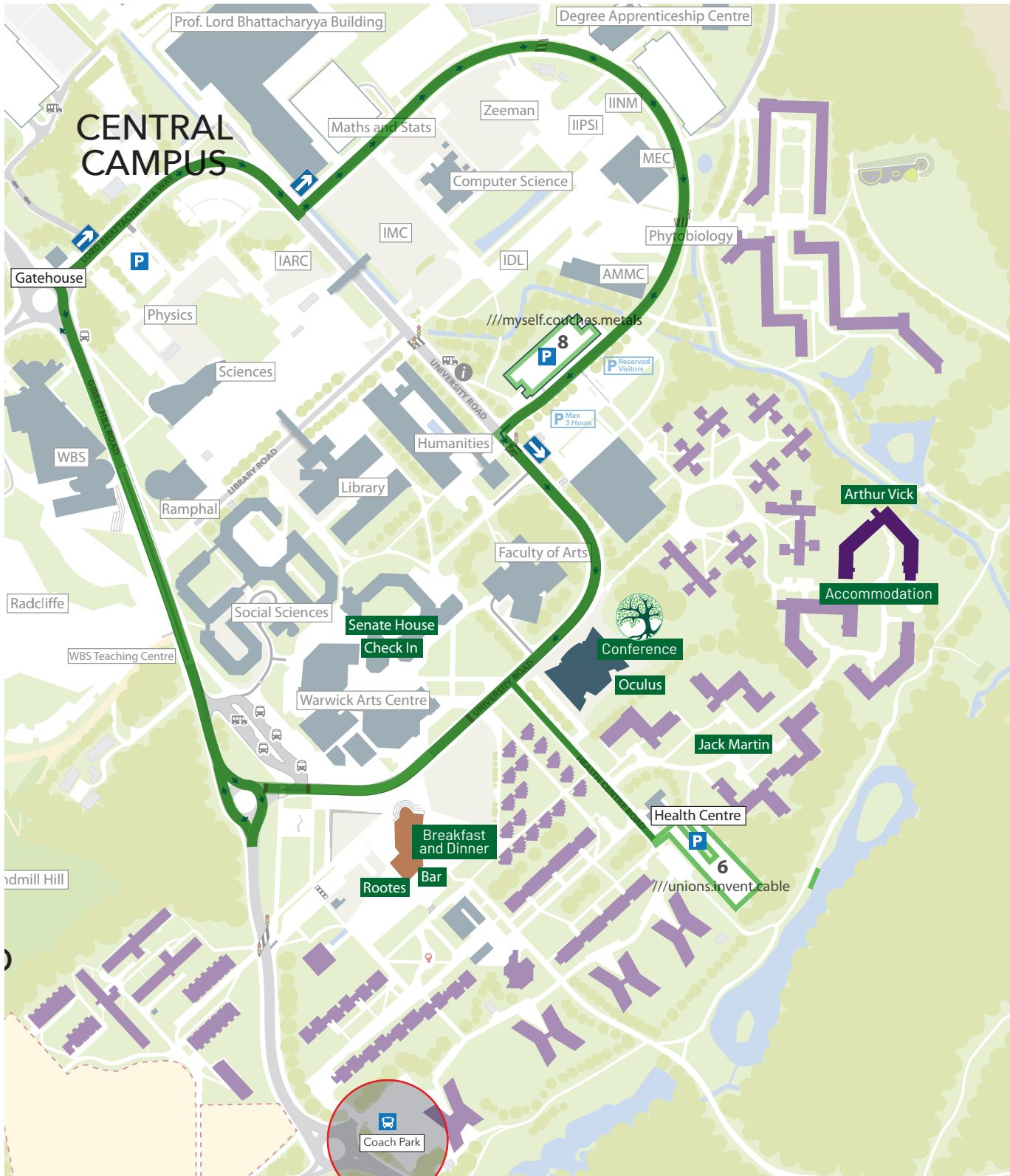
the team.

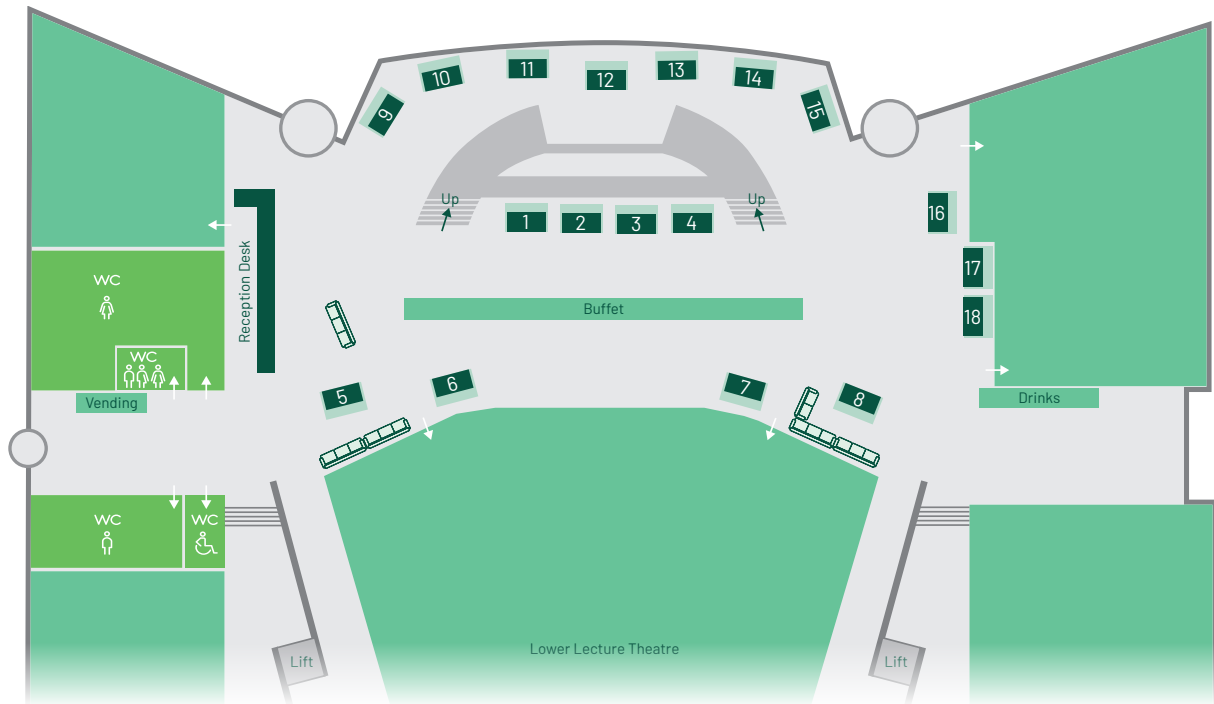
## Out of Hours contacts:

Emergencies, Community Safety Team:  
**+44 (0)24 765 22222.**

General Assistance:  
**+44 (0)24 765 22083** (24 hour).

## Campus Map





**Stand 01** **Treeconomics**  
Nadine Moreby/John Rose  
[www.treeconomics.co.uk](http://www.treeconomics.co.uk)

Treeconomics will be showcasing TreeKeeper, a web-based urban forest management tool, which enables users to schedule and track work orders and manage their tree populations.



**Stand 02** **Tree Diagnostics**  
Ian Barnes  
[www.treediagnostics.co.uk](http://www.treediagnostics.co.uk)

"Tree Diagnostics" a specialist division of Barnes Associates Ltd - Importer - Trainer for non-destructive testing of trees. Cost effective Fakopp Enterprises range of systems (similar to Picus/Arbortom) Arborsonic (Sonic) and ArborElectro - electrical tomography. Tree stability 'Tree Pulls' and Dynamic 'DynaRoot'. Ongoing support by Arboricultural Consultants. Sub-consultant service available including Tree Radar - root mapping, Thermal & Drone Surveying.



**Stand 03** **KTF Software**  
Scott Fitzgerald  
[www.ktfsoftware.com](http://www.ktfsoftware.com)

KTF Software presents Qarb, the super-fast, user-friendly tree plotting software for BricsCAD and AutoCAD. Effortlessly create BS 5837 compliant tree surveys with customizable features to produce high-quality, professional Tree Survey Plans for arboriculturists. Transform your workflow with precision and simplicity.



**Stand 04** **Pear Technology Services Ltd**  
Mark Lloyd  
[www.peartechnology.co.uk](http://www.peartechnology.co.uk)

Pear Technology & OTISS tree management software. 'One Stop' solution, including mapping and survey, software and hardware, plus training and support.

Enables BS5837 | VTA | THREATS | QTRA | TEMPO | outlines or user customised, surveys.



**Barcham**  
The Tree Specialists

**Stand 05** **Barcham Trees plc**  
David Johnson  
[www.barcham.co.uk](http://www.barcham.co.uk)

Times for Trees books with Carbon Capture information will be free to collect as well as industry related manuals.

A small collection of container grown trees will be there to view and discuss with Emma, Lee and David.



**Stand 06** **ezytreev**  
Robert Taylor and Paul Vongyer  
[www.ra-is.co.uk](http://www.ra-is.co.uk)

**Ezytreev** is designed to assist professionals in the management and maintenance of their tree, woodland and landscape features. Covering everything from storing and managing current and historic data, all inspections and works, to offering full support for surveys and risk calculations, through to work order scheduling and tracking, budgeting, contractor management and processing enquiries. In-the-field data collection, including surveys, inspections, enquiries, and work monitoring. Support for identifying trees for a new and reviewing existing TPOs, as well as efficient processes for works applications/notices.



**Stand 07** **Sorbus International Ltd**  
Thomas Wade  
[www.sorbus-intl.co.uk](http://www.sorbus-intl.co.uk)

Sorbus supply specialist products for arboriculture, forestry, utilities, horticulture, landscaping & grounds maintenance. Including the remarkable IML Resi-PD microdrill for wood decay evaluation and the PICUS range for trees including the market leading PICUS 3 sonic tomography system, TreeTronic electrical resistance tomography and TreeMotion Sensor systems. Recently introduced the PICUS Tension drought stress monitoring system gives early warning when trees are under drought.



**Stand 08** **Green Grid Systems**  
Lewis Holmes  
[www.greengridsystems.com](http://www.greengridsystems.com)

Green Grid Systems offer a comprehensive solution for the ongoing preservation of trees. Our RootBridge system helps integrate existing trees into new projects by protecting the sensitive tree roots and providing a support layer for a surface finish.



**Stand 09** **Geosynthetics Ltd**  
Colin Dobson  
[www.geosyn.co.uk](http://www.geosyn.co.uk)

Not just a product supplier, Geosynthetics Limited provides "inspired solutions for civil engineering" through its team of design and application engineers.

Using extensive knowledge of product and applications the team are developing an enviable reputation for innovative and sustainable solutions that not only achieve the desired objectives but also save time and reduce costs.



**Stand 10** **ArbEvolve**  
Andrew Crossley  
[arbevolve.co.uk](http://arbevolve.co.uk)



**Stand 11** **Bluesky International Limited**  
Alice Hilton  
[bluesky-world.com](http://bluesky-world.com)

Bluesky International is an aerial survey and geographic data company. We are home to the unique National Tree Map - a national tree dataset capturing height, location and canopy/crown extent of all trees 3m and taller.



**Stand 12** **Vertinetik Limited**  
Carlos Dugarte  
[www.vertinetik.com](http://www.vertinetik.com)

**ERDO** - Remote sensing platform for identifying and monitoring diseases in forestry.



**WOODLAND TRUST**

**Stand 13** **Woodland Trust**  
Lee Cox  
[www.woodlandtrust.org.uk](http://www.woodlandtrust.org.uk)

Founded in 1972 the Woodland Trust is the largest woodland conservation charity and a leading voice in bringing the UK's trees and woodlands to the attention of Government, land owners and the public.



**Stand 14** **Hillier Nurseries**  
William Innes-Taylor  
[www.hillier.co.uk](http://www.hillier.co.uk)

Expert growers of British trees, supplying the landscaping industry for over 150 years. We specialise in a wide range of trees, from 8-10cm girth to semi-mature specimens, both field and container grown. Our services extend to contract growing, and our focus is on plant health and biosecurity.

ArbEvolve makes surveying trees in the field for BS5837 or hazard surveys easy. With quick easy to use input and single click export to Excel tree schedules and CAD topos. All customisable to the way your business works.



**Stand 15** **Summerfield Books**  
Paul O'Hara  
[summerfieldbooks.com](http://summerfieldbooks.com)

Well established bookseller whose areas of special interest include new and second handbooks on trees, arboriculture and forestry.



**Stand 16** **ArborTrack**  
Quentin Nicholls  
[www.arbortrack.com](http://www.arbortrack.com)

ArborTrack provides the solution for your Tree and Vegetation management software for unlimited numbers of trees for the Administrator, Surveyor, or Contractor in a live, real-time environment.



**Stand 17** **ArborFlight**  
Quentin Nicholls  
[www.arborflight.co.uk](http://www.arborflight.co.uk)

Our Airborne Tree, Vegetation and Turf Surveying and Analysis Services utilising multispectral, high-resolution imagery and thermal sensors to acquire precise information and data for your tree and vegetation assets.



**Stand 18** **Greenfix**  
Roy Partington  
[www.greenfix.co.uk](http://www.greenfix.co.uk)

Greenfix is the leading designer and supplier of soil stabilisation and erosion control systems in the UK. Greenfix supply Geoweb® which is used extensively for a wide variety of solutions to issues including tree root protection, load support, slope & earth retention.



**A.M. Lane Ltd**  
Tony Lane  
[amlane.co.uk](http://amlane.co.uk)

## Monday 9<sup>th</sup> September morning session

08:00-08:45	Registration	
08:45-08:55		<b>WELCOME AND INTRODUCTION</b> <i>Session Chair: Michelle Ryan</i> (Arboricultural Association Chair)
08:55-09:20		<b>CLIVE MAYHEW</b> <b>UK</b> Tree work before the chainsaw
09:20-09:45		<b>STEFANIA GASPERINI</b> <b>ITALY</b> An introduction to morphophysiology
09:45-10:10		<b>JESSE COLEMAN</b> <b>NEW ZEALAND</b> The Mauao Blackhawk project
10:10-10:30	Questions	
10:30-11:10	Break	
11:10-11:15		<b>WELCOME AND INTRODUCTION</b> <i>Session Chair: Louise Simpson</i> (Institute of Chartered Foresters)
11:15-11:40		<b>AARON SHEARER</b> <b>ICELAND</b> The urban forest structure within Iceland
11:40-12:05		<b>ALEKSANDRA ZIENKIEWICZ</b> <b>POLAND</b> Experiences of planting and establishing new trees in Wrocław
12:05-12:30		<b>JONATHAN FULCHER</b> <b>UK</b> The power of narrative
12:30-12:50	Questions	
12:50-13:50	Lunch	



## Monday 9<sup>th</sup> September afternoon session

13:50-13:55		<b>WELCOME AND INTRODUCTION</b> <i>Session Chair: Tony Kirkham</i> (Arboricultural Association Vice President)
13:55-14:20	  	<b>SPEED BRIEFING AND AWARD PRESENTATIONS</b>
14:20-14:45		<b>REG HARRIS</b> <b>UK</b> <b>Hornbeam decline: A new disease to the UK</b>
14:45-15:10		<b>HENRY KUPPEN</b> <b>NETHERLANDS</b> <b>Sooty bark disease can no longer be ignored</b>
15:10-15:30	<b>Questions</b>	
15:30-16:30		<b>PANEL SESSION: Morphophysiology</b> <i>Session Chair: Keith Sacre</i> <b>Panel speakers:</b> <b>Stefania Gasperini</b> (Italy) <b>Giovanni Morelli</b> (Italy) <b>Russell Miller</b> (UK) <b>Simon Richmond</b> (UK)
16:30-16:45	<b>Changeover</b>	
<b>WORKSHOPS</b>		
16:45-17:45	<b>Modern Arboriculture (in the AI Era): Beyond Touching Trees</b> – Callum Throw <b>Trees and the law – Ignorance is no excuse</b> – Charles Mynors and Liz Nicolls <b>BS 5837 – Revision to date and going forward</b> – Howard Booth <b>Registered Consultants</b> – Emma Gilmartin, Simon Richmond and Martin Dobson <b>An Audience with Ted Green</b> – Ted Green <b>Formative Pruning of Young Trees</b> – Keith Sacre and Ben Coles <b>Urban Forest Storytelling: Intersectional Belonging in Practice</b> – Lotte Dijkstra	
17:45	<b>CLOSE</b>	
18:00-19:00	<b>Exhibitors' wine reception</b> – Oculus atrium <i>Exhibitor Award announced at 18:15</i>	
19:00	<b>Free time</b>	
20:00	<b>Conference dinner in the Panorama Suite, Rootes Building</b> <i>Bar until 01:00</i>	

Please note that speakers, times and content may change due to unforeseen circumstances.

## Tuesday 10<sup>th</sup> September morning session

08:00-08:45	Registration	
08:45-08:55		<b>WELCOME AND INTRODUCTION</b> <i>Session Chair: Emma Gilmartin</i> (Arboricultural Association)
08:55-09:20		<b>KATHLEEN WOLF</b> UNITED STATES City Trees and Human Wellness: Research to Action
09:20-09:45		<b>JIM HANDLEY</b> UK Rejuvenating the historic avenues of Grimsthorpe Castle, UK
09:45-10:10		<b>RYAN KLEIN</b> UNITED STATES Using AI to assist with proper tree selection
10:10-10:30	Questions	
10:30-11:10	Break	
11:10-11:15		<b>WELCOME AND INTRODUCTION</b> <i>Session Chair: Caitlyn Pollihan</i> (International Society of Arboriculture)
11:15-11:40		<b>KENTON ROGERS</b> UK Finding your way through the urban forest: Insights from a year of workshops
11:40-12:05		<b>PHILIPPE TROUILLET</b> FRANCE Mechanical features: Towards new methods of building an observation-based likelihood of failure
12:05-12:30		<b>JILL BUTLER</b> UK Heritage trees and historic avenues: Retention v removal
12:30-12:50	Questions	
12:50-13:50	Lunch	

## Tuesday 10<sup>th</sup> September afternoon session

13:50-13:55		<p><b>WELCOME AND INTRODUCTION</b>  <i>Session Chair: Lynne Boddy</i> (Cardiff University)</p>
13:55-14:20		<p><b>CLAUDIA CANEDOLI AND DAVIDE CORENGIA, ITALY</b>  <b>Habitat trees: Studying biodiversity associated with trees and its implications for management</b></p> 
14:20-14:45		<p><b>MENNO KLUITERS</b>  <b>NEW ZEALAND</b>  <b>Post-cyclone tree failure patterns in New Zealand</b></p>
14:45-15:10		<p><b>JULIAN FORBES-LAIRD</b>  <b>UK</b>  <b>Trees and decay fungi: A new approach</b></p>
15:10-15:30	<b>Questions</b>	
15:30-16:30		<p><b>PANEL SESSION:</b>  <b>Succession in Arboriculture: International perspectives</b>  <i>Session Chair: Michelle Ryan</i></p> <p>With a panel featuring a selection of our conference speakers.</p>
16:30-16:45	<b>Changeover</b>	
16:45-17:45	<p><b>WORKSHOPS</b></p> <p><b>Modern Arboriculture (in the AI Era): Beyond Touching Trees</b> – Callum Throw  <b>Trees and the law – Ignorance is no excuse</b> – Charles Mynors and Liz Nicolls  <b>BS 5837 – Revision to date and going forward</b> – Howard Booth  <b>Registered Consultants</b> – Emma Gilmartin, Simon Richmond and Martin Dobson  <b>An Audience with Ted Green</b> – Ted Green  <b>Formative Pruning of Young Trees</b> – Keith Sacre and Ben Coles  <b>Urban Forest Storytelling: Intersectional Belonging in Practice</b> – Lotte Dijkstra</p>	
17:45	<b>CLOSE</b>	
18:30	<p>For delegates booked to stay on Tuesday  <b>Dinner in the restaurant in the Rootes Building</b>  <i>Bar until 01:00</i></p>	

Please note that speakers, times and content may change due to unforeseen circumstances.

At Conference 2024 the Association is running an expanded range of workshops and panel discussions, offering more choice to delegates and encouraging the sort of in-person engagement and discussion that even the best online events are unable to offer.

Each day of Conference features workshops to choose from, including panel discussions and workshops. Workshop sessions will last around an hour, and some sessions will have a cap on numbers.

## Modern arboriculture (in the AI era): Beyond touching trees



As we embrace a new technological era, this workshop is an urgent call to explore how generative AI is more than simply an innovation: it is a necessity, transforming the very core of businesses, including arboriculture. In a world where change accelerates daily, staying ahead is challenging, but recognising and embracing

the revolutionary power of generative AI is critical. As modern arboriculture evolves, so should our tools and techniques. This workshop provides a preliminary overview of how generative AI tools such as ChatGPT might help redefine how we operate.

## BS 5837: Revision to date and going forward

A workshop to provide an update on the revision of BS 5837. A presentation will outline the process with an insight in to feedback and areas of revision. Delegates will have the opportunity to participate in a discussion session to contribute to the revision process.



## Formative pruning of newly planted trees, why it is necessary and what is to be gained

The workshop will be divided into two sections. The first indoors with a presentation on the theory and practice and why it is necessary. The second will be outdoors working on young trees coupled with discussion and demonstration.



## Trees and the law – Ignorance is no excuse



Charles and Liz will deliver a presentation highlighting some current topics, and delegates will have the opportunity to participate in a discussion session.

## An Audience with Ted Green

A chance to discuss trees and Ted's inimitable views on their care and protection.



## Urban Forest Storytelling: Workshop Intersectional Belonging in Practice

For many humans, urban forests are nature close to home. For more-than-human beings, urban forests are home. At the same time, engagement with and access to urban forests and their countless benefits are unequal. Quantitative data show how human age, ethnicity, health, and deprivation influence levels of engagement with and time spent in nature. What we don't know, however, is how intersecting identities impact perceived access to urban forests. Beyond availability and attractiveness, cultivating a sense of belonging seems to play a role in mitigating this unequal access. But what does it mean to belong in an urban forest place? Who belongs?



**Lotte Dijkstra continued...**

Arboriculturists are key players in facilitating contact between humans and trees in urban environments. Join this workshop on urban forest storytelling to explore your own understanding of urban forests, how our human and more-than-human stories overlap, and how these stories of lived experiences can help us work towards making urban forests more inclusive for all. The workshop concludes with a moment of story sharing, comparing experiences and taking note of emerging themes and applicable tools.

This workshop is part of ongoing PhD research by Lotte Dijkstra at Newcastle University, exploring the relation between senses of belonging and equitable access to urban forests. The resulting insights and methodology aim to contribute to the intersection of urban forestry, socio-environmental justice and multispecies community engagement and to support fair, healthy and resilient urban forest planning, design and management.

## Registered Consultants Scheme



If you are considering applying to become a Registered Consultant with the Arboricultural Association, or if you would just like to find out more about how the Scheme works and why

it is so important to our sector, then join the Association's Senior Technical Officers Emma Gilmartin and Simon Richmond and Dr Martin Dobson for an in-depth discussion.



## Monday's Morphophysiology Panel Discussion

Chaired by Keith Sacre

With Stefania Gasperini, Giovanni Morelli, Russell Miller and Simon Richmond



Whether you attended the Sunday Morphophysiology walk in the War Memorial Park or not, this panel session will further explore how we can incorporate these new ideas into our daily working lives, advising on and carrying out the best possible solutions for trees at all stages of life.



## Succession in Arboriculture: International perspectives

Chaired by Michelle Ryan

An in-depth moderated Q&A and discussion which will delve into the ongoing challenges for succession in global arboriculture.

With a panel featuring a selection of our conference speakers.











## Speaker profiles



### CLIVE MAYHEW

(UK)

Clive Mayhew is a Fellow of the Arboricultural Association who has worked in arboriculture since the early 1990s as a practitioner, a local government officer and an independent consultant. A long-standing advocate of custodial arboriculture, he sees tree professionals as fleeting caretakers of the trees and landscapes in their care. This prompted his desire to learn more about the trees we inherit. Much to his surprise, this research has expanded into a millennium-spanning, global story, stretching from ancient Mesopotamia to the Americas, from the Amazon to the Sussex Weald. It is also a story that contains many strikingly familiar themes for the contemporary practitioner.



### BENOIT DE REVIERS

(France)

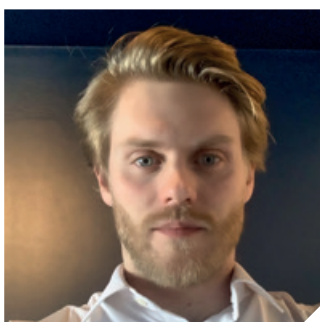
After working as an arborist climber for 10 years, Benoit de Reviere is now an arboricultural consultant. He has a Master's degree in human sciences and educational sciences, and has worked around the world, including in Canada, the USA, Australia and Sweden. In 2018, he created Arbres & Solutions to provide advice and consultancy services on amenity tree management. He is working on 'a modern approach to arboriculture, based on clinical diagnosis and methodical tree risk management, with the aim of better preserving our tree heritage' and provides solutions for, and training in, the installation, management and control of bracing systems.



### JESSE COLEMAN

(New Zealand)

Jesse Coleman is the owner of Kōwhai Treecare. With a professional tenure in the industry spanning 15 years, Jesse has dedicated a substantial portion of this time to working in various corners of the globe, living out the quintessential arborist's dream. Throughout Jesse's career, they have been fortunate to engage in and lead extensive projects, often involving cranes and helicopters. However, the most fulfilling and enjoyable aspect of their work is pruning and taking care of mature trees. In May 2018, Jesse made the pivotal decision to return to New Zealand and embark on the journey of establishing their own company.



### AARON SHEARER

(Iceland)

Aaron Shearer is an International Society of Arboriculture Certified Arborist who holds an MSc in arboriculture and urban forestry. He has worked in a variety of roles in arboriculture and urban forestry, but in recent years his career has taken a dramatic change. He moved to Iceland two years ago and since then has worked for the Icelandic forest service on a multitude of projects. He is currently based in the certification department. Because of his interest in urban forestry, he has also conducted an array of research into the structure of Iceland's urban tree canopy.



## ALEKSANDRA ZIENKIEWICZ

(Poland)

Aleksandra Zienkiewicz has been the co-ordinator of the Municipal Green Spaces Management Authority in Wrocław since 2018. She is responsible for cooperation in planning and strategic documents, the Green Patronage donors' programme (Zielony Mecenat) and collaboration with NGOs. Educated in environmental protection and spatial planning, she is also a Certified Tree Inspector and has been promoting trees in the cityscape since 2014. She is the founder of Treecity (miastoDrzew) (a tree protection association) and leader of Wrocław's Participatory Budget tree projects. She initiated and led the campaign to prevent the modification of tree protection law in Poland (2016) and co-authored social amendments to new regulations to minimise their negative consequences.



## JONATHAN FULCHER

(UK)

Jonathan Fulcher is an ex-tree surgeon, ex-tree officer and now an arb consultant in private practice. He has written thousands of reports since 2002 and over 600 decisions for Planning Inspectorate TPO appeals: 'Every day I'm engaging with clients and prospective clients and tree officers and architects, telling stories, helping people see what's going on and how we might come to a successful outcome.'



## REG HARRIS

(UK)

Reg Harris is an arborist and consultant of nearly four decades whose primary focus is veteran and ancient tree work. He also specialises in habitat pruning (veteranisation). He is renowned for his work at sites including Sherwood Forest (Nottinghamshire) and Hatfield Forest (Essex) where he has helped develop and champion new techniques for managing and pruning veteran and ancient trees.



## HENRY KUPPEN

(Netherlands)

Henry Kuppen is an arboricultural consultant from the Netherlands with over 40 years of professional experience in managing trees in the urban environment. He specialises in the management of pests and diseases using a holistic approach. He works as Tree Ambassador at Terra Nostra, a knowledge centre for trees and soils. He is actively involved in educating established and new-generation professionals about the maintenance and importance of trees and tree work as supervisor at the European Arboricultural Council. Henry is an accomplished public speaker who shares his knowledge by giving passionate talks and workshops to other professionals around the world.

# Speaker profiles



## KATHLEEN WOLF

(United States)

Kathleen Wolf has built a multi-decade research program about human dimensions of urban forestry. Publications are aimed at building better knowledge of the social and psychological benefits that city trees provide, and sharing that across non-traditional audiences, including business, public health, medicine, and urban planning. Recent work has included One Health collaborations about the intersection of biodiversity and human health. Kathy has collaborated with international partners, and presented her research at conferences on all continents except Antarctica (maybe one day?). Nature and Health research is summarized at *Green Cities: Good Health*: <https://depts.washington.edu/hhwb/>



## JIM HANDLEY

(UK)

Jim Handley has been involved in horticulture for over 20 years. He started his career at F.P. Matthews, where his interest in trees began. He trained at Moreton Morrell College and the Royal Botanic Gardens, Kew, and he has recently completed the RHS Master of Horticulture qualification. He is Head of Gardens & Landscape at Grimsthorpe Castle where his varied role involves managing 70 acres of gardens and historic avenues as well as assisting with the management of over 300 acres of SSSI woodland pasture and limestone grassland.



## RYAN KLEIN

(United States)

Ryan Klein is an Assistant Professor of Arboriculture at the University of Florida. He has 12 years of experience in the nursery and tree care industry. Ryan has received the International Society of Arboriculture (ISA) Arborist Certification, Quantified Tree Risk Assessment (QTRA) Certification, ISA Tree Risk Assessment Qualification (TRAQ) and Prescription Pruning Qualification (PPQ). He is the Past-President of the Arboricultural Research and Education Academy (AREA) and sits on the Florida Chapter of the ISA Educational Board. His research focuses on tree risk assessment and risk perception, as well as the impacts of natural disasters and climate change on urban tree populations.



## KENTON ROGERS

(UK)

Kenton Rogers is a Chartered (Urban) Forester with a Masters in forest ecosystem management. In 2011 he co-founded Treeconomics, an urban forest consultancy. During his career he has worked on a range of community and urban forestry projects in the UK, Europe and North Africa. Kenton was a Trustee of the International Tree Foundation for 10 years and is a Fellow of the Royal Geographical Society. He was a contributing author for the Urban section of UK National Ecosystem Assessment and the Springer *Urban Forest Handbook*. More recently he co-authored the *Haynes Manual for Trees*.



## PHILIPPE TROUILLET

(France)

Originally a climbing arborist, then a consultant and trainer, since 2015 Philippe Trouillet has been running a consultancy and training centre in France. He now specialises in clinical mechanical and tree risk assessment. Philippe has a Master's degree in Education Sciences and his research thesis allowed him to investigate professional attitudes in arboriculture. He also explores using engineering methods (scoring, management strategies, auditing), and has published a number of articles in professional journals.

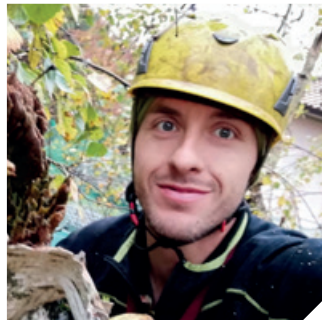
After a degree in Philosophy followed by an artistic career, Olivier Dambizat has been associated with Philippe Trouillet since 2018, working with him on the subjects that drive him in arboriculture, and to provide technical and theoretical support for the development of new ideas and methods, as well as that of our consultation and training centre in the south of France.



## JILL BUTLER

(UK)

For at least 30 years Jill Butler has had a specialist interest in ancient and other veteran trees and ancient Forests, wood pastures and parkland. This interest has led her into exploring and understanding the history and structure of past landscapes through ancient trees. Jill is a qualified VETcert Consultant. She is also a keen surveyor and verifier for the Ancient Tree Inventory, a project hosted by the Woodland Trust in partnership with the Tree Register of the British Isles and the Ancient Tree Forum. She is a Trustee of the Forest of Selwood and the Tree Register of the British Isles.



## CLAUDIA CANEDOLI AND DAVIDE CORENGIA

(Italy)

Claudia Canedoli is a researcher at the Landscape Ecology Laboratory in the Department of Earth and Environmental Sciences at the University of Milano Bicocca. She holds a PhD in urban ecology and her background is primarily focused on the quantification and mapping of ecosystem services within terrestrial ecosystems, especially urban and natural forests. Her current work centres on bridging gaps in biodiversity

knowledge, investigating biodiversity associated with trees, species relationships, and reducing conflicts between humans and trees in urban areas.

Davide Corengia is a European Tree Worker and works in projects aimed at integrating biodiversity conservation measures into tree management practices. He founded Biotreeversity, an action community which studies, manages and communicates the importance of trees by considering the biodiversity associated with them. He collaborates with various research projects including the creation of artificial nests for bats, birds and insects and tree biodiversity surveys. He is a member of SIA, the Italian Chapter of the International Society of Arboriculture.



## MENNO KLUITERS

(New Zealand)

Menno Kluiters has been climbing trees professionally for 25 years and has been privileged to work alongside many skilled and passionate arborists worldwide. As a keen young man, he enjoyed nothing more than cutting trees down. That was until he met other weathered role models who, he says, 'made me realise the beauty and value of trees. After five years "under my belt" (harness), my real captivating tree journey had only just begun. Now, after dwelling in canopies for many years, more and more tree-related patterns are recognised and understood. Even though I'm no spring chicken, I still thoroughly enjoy hanging out with my woody friends, high up in the canopy, and long may it last. These days my goal is to provide better tree care and pass on the knowledge that trees have shared with me. After all, the trees remain my greatest teacher.'

## Speaker profiles



### JULIAN FORBES-LAIRD

(UK)

Julian Forbes-Laird has been an arboricultural consultant since 2000, having previously worked for 10 years as a climbing arborist. He is a Chartered Arboriculturist and a member of the Institute of Chartered Foresters, the Royal Society of Biology, the Royal Institution of Chartered Surveyors, the Expert Witness Institute and the Arboricultural Association. He is Chair of the British Standards Institution's technical committee B/213 (Trees & Tree Work) and a Licensed Lecturer in Visual Tree Assessment for the Karlsruhe Institute of Technology.

Elevate your plant health practices with precision & speed!

Control the future of  
**PLANT HEALTH**  
with Pocket Diagnostic Tests



Why choose Pocket Diagnostic?

- ✓ Rapid Results
- ✓ User-Friendly
- ✓ Compact Design
- ✓ Bulk Discounts

Rapid lateral flow tests for:

- ✓ Phytophthora
- ✓ Potato Virus Y
- ✓ Erwinia Amylovora
- ✓ Ralstonia Solanacearum

**POCKET**<sup>®</sup>  
DIAGNOSTIC



Are you ready to revolutionise your approach to plant health?  
Detect 4 plant diseases with our industry leading plant health tests.

**SORBUS**  
I N T L

Call: 01373 475540  
Or visit: [www.sorbus-intl.co.uk](http://www.sorbus-intl.co.uk)



## Key:

**M** Monday Delegate **T** Tuesday Delegate **W** Wednesday Field Trip

Delegate Name	Company	Event Day
<b>Aaron Shearer</b>	Icelandic Forest Service	M T W
<b>Adam Scott</b>	Brown Bear Tree Care	T
<b>Adam Whittingham</b>	Cheshire Woodlands	M T
<b>Adrian Clarke</b>	Tracy Clarke Tree Consultancy	M
<b>Al Buchanan</b>	Aimis Tree Care	M T
<b>Alan Simson</b>	White Rose Forest / EFUF	M T W
<b>Alastair Cuthill</b>	AT2 Tree Survey	M T
<b>Aleksandra Zienkiewicz</b>	Municipal Green Spaces Management Authority	M T W
<b>Alex Adams</b>	University Of Exeter	M T W
<b>Alex Cannon</b>	Clear Tree	M
<b>Alex Finn</b>	Cemex UK Operations Limited	M T
<b>Alice Hilton</b>	BlueSky International	M T
<b>Alice McAuley</b>	Tim Moya Associates	M
<b>Alistair Godfrey</b>	Ligna Consultancy Ltd	T
<b>Alistair Hearn</b>	Treescapes Consultancy Ltd	M T
<b>Alistair Rankine</b>	Hillside Trees Ltd	T
<b>Amelia Williams</b>	The Arboricultural Company	M T W
<b>Andrew Belson</b>	Belson Tree Surveys	M T
<b>Andrew Bowman-Shaw</b>	The Tree And Woodland Company Limited	M T
<b>Andrew Cleaves</b>	Treecall Consulting Limited	M T
<b>Andrew Crossley</b>	Arbevolve	M T
<b>Andrew Gale</b>	Gale Tree Consultancy Ltd	M T
<b>Andrew Mortimer</b>	Caerphilly County Borough Council	M T
<b>Andrew Summerley</b>	Tree Life Arboricultural Consultancy Ltd	M T W
<b>Andy Davies</b>	Glendale Services	T
<b>Andy Leese</b>	Rammsanderson Ecology Ltd	T
<b>Angus Blankenstein</b>	TEP - The Environment Partnership Limited	T
<b>Antony Price</b>	Tree Life Arboricultural Consultancy Ltd	M T W
<b>Aran Kimberlee</b>	Dartforest Limited	M T
<b>Barry Goodman</b>	The Parks Trust	M T
<b>Bart Van Duijnhoven</b>	Terra Nostra	M T W

Delegate Name	Company	Event Day
<b>Becky Woods</b>	Geosynthetics Limited	M T
<b>Ben Batt</b>	Northern Arb Ltd	M
<b>Ben Coles</b>	Treeconomics	M T W
<b>Ben Oates</b>	Down To Earth Trees - Consultant	M T
<b>Ben Riches</b>	ArbAdvice Consultancy	M T W
<b>Ben Rose</b>	ArbSkills - Training	M T
<b>Ben Southall</b>	Treetech Arboricultural Services Limited	M T
<b>Ben Woodford</b>	Hankinson Duckett Associates Ltd	M T
<b>Benedict Edmonds</b>	Bartlett Tree Experts	T
<b>Benjamin Hallinan</b>	Ligna Consultancy Ltd	T
<b>Benjamin Jones</b>	Nicholsons	M T
<b>Benjamin Wainhouse</b>	The Environmental Dimension Partnership	M T
<b>Benoit de Reviere</b>	Arbres et Solutions	M T W
<b>Bettina Broadway-Mann</b>	Broadway Tree Consultancy	M T W
<b>Brian Wallis</b>	RPS Planning and Development	M T
<b>Caitlyn Pollihan</b>	CEO, ISA	M T W
<b>Callum Throw</b>	Arb Innovators	M T W
<b>Carl Lothian</b>	Crown Trees	M T
<b>Carl Pedley</b>	Bartlett Tree Experts	M T
<b>Carlos Dugarte</b>	Vertinetik Limited	M T
<b>Caroline Campbell</b>	Woodland Trust	T
<b>Cath Tyrell</b>	Summerfield Books	M T
<b>Charles Mynors</b>	Lawyer, Author	M T
<b>Charlie Reeley</b>	University Of Exeter	M T W
<b>Charlie Usher</b>	CSG (Usher's) Ltd	M
<b>Chess Bygrave</b>	University Of Exeter	M T W
<b>Chin Fung Chan</b>	Merton Council	M T
<b>Chris Alder</b>	Barrell Tree Consultancy	M T
<b>Chris Cooper-Abs</b>	Arb Matters	M
<b>Chris Davis</b>	Geosynthetics Limited	M T
<b>Chris Hogg</b>	Bradford On Avon Town Council	M T W
<b>Chris Jackson</b>	Aragon Direct Services	T
<b>Chris Knapman</b>	Knapman Partnership	M T
<b>Chris Rayner-Rix</b>	Redswoodlands Limited	M T W

# Delegates

Delegate Name	Company	Event Day
<b>Chris Watson</b>	Bartlett Tree Experts	M T
<b>Christian Williams</b>	Savills UK (Ltd)	T
<b>Christopher Plummer</b>	Tommy Plummer Tree Services	M T
<b>Clare Rutherford</b>	Barrell Tree Consultancy	M T W
<b>Claudia Canedoli</b>	University of Milano Bicocca	M T W
<b>Clive Mayhew</b>	The Mayhew Consultancy	M T W
<b>Colin Dobson</b>	Geosynthetics Limited	M T
<b>Colin Quinney</b>	Bourne Leisure	M T
<b>Cormac Downey</b>	Fingal County Council	M T W
<b>Craig McCrindle</b>	High Peak Borough Council	M T W
<b>Daisy Brasington</b>	Crown Trees	M
<b>Dale Mortimer</b>	LTOA	M T W
<b>Dan Curtis</b>	Flagship Services	M T W
<b>Dan Konstantindis</b>	Heritage Tree Services	T
<b>Dan Pennington</b>	Connick Tree Care	M
<b>Daniel Bousfield</b>	D. Bousfield Tree Services	M T
<b>Daniel Newby</b>		M T
<b>Daniel Rowley</b>	Property Risk Inspection Ltd	T
<b>Daniel Smith</b>	Wolverhampton Tree Services	M T
<b>Darren Overall</b>	John O'Conner (GM) Ltd	M T W
<b>Darren Whitaker</b>		M T W
<b>Dave Legrand</b>	KTF Software	M T
<b>David Cashman</b>	Barrell Tree Consultancy	M T
<b>David Challice</b>	Challice Consulting Ltd	M T
<b>David Chesterton</b>	WSP	M T
<b>David Clarke</b>	DCCLA	T
<b>David Dowson</b>	Tree Life Consultant Retired	M T W
<b>David Evans</b>	University Of Exeter	M T W
<b>David Franklin</b>	Urban Forestry (Bury St Edmunds) Ltd	M T
<b>David Horgan</b>	Lampton Green Space 360	M T
<b>David Johnson</b>	Barcham Trees plc	M T
<b>David Peake</b>	Active Tree Management	M T W
<b>David Richards</b>	Coventry City Council	M T
<b>David Robinson</b>	Thompson Tree Services (Midlands) Ltd	M
<b>David Simpkin</b>	4 D Tree Survey Ltd	M T

Delegate Name	Company	Event Day
<b>David Woodward</b>	The Parks Trust	M T
<b>Davide Corengia</b>	Biotreeiversity	M T W
<b>Dawn Hughes</b>	North Northamptonshire Council	M T W
<b>Dean Jackson</b>	University of Warwick	M T
<b>Dean Meadows</b>	Arbtech Consulting Limited	M T
<b>Dennis Larbaestier</b>	Tim Moya Associates	M T W
<b>Dominic Scanlon</b>	Aspect Tree Consultancy Ltd	M T
<b>Don Newling</b>	Hankinson Duckett Associates Ltd	M T W
<b>Dorothy Hayden</b>		M T W
<b>Ed Pyne</b>	Woodland Trust	M T W
<b>Elizabeth Nicholls</b>	Barrister, Mediator and Arbitrator	M T
<b>Ellie Watton</b>	South Staffordshire College	M
<b>Emily Kempson</b>	Arbtech Consulting	M T
<b>Emma Barker</b>	Barcham Trees plc	M T
<b>Emma Bishop</b>	Aragon Direct Services	M
<b>Fearghus Gage</b>	Arbtech	M T
<b>Felim Sheridan</b>	Arborists Associates Ltd	M T
<b>Fiona Bradshaw</b>	Sylva Consultancy	M
<b>Fiona Melville</b>	FM Tree Consultancy Ltd	M T W
<b>Franco Milito</b>	Franco Milito Dottore Agronomo	M T W
<b>Frank Spooner</b>	SJAtrees	M T
<b>Fredrick McCreery</b>	Nicholsons	M T
<b>Gareth Davies</b>	Bartlett Tree Experts	M T
<b>Gareth Meadows</b>	RSK Hi-line	T
<b>Gareth Powell</b>	Aragon Direct Services	T
<b>Gary Hill</b>	Bartlett Tree Experts	M
<b>Gavin Scott</b>	Consultant	M T W
<b>George Brown</b>	Carter Jonas	M T
<b>George Harding</b>	Sapwood Tree Care	M
<b>George Peet</b>	Ministry Of Defence	M T
<b>Giles Biddle</b>	P.G. Biddle	M T
<b>Giovanni Morelli</b>	Progetto Verde	M T W
<b>Glen Poole</b>	County Tree Surgeons Ltd	M T
<b>Glyn Jones</b>	Tim Moya Associates	M T W
<b>Glyn Thomas</b>	Cheshire Woodlands	M T



Delegate Name	Company	Event Day
<b>Gordon Stuart</b>	Consultant	M T
<b>Grady Edgington</b>	Ground Control	M T
<b>Graham King</b>	Tree King Consulting	M T
<b>Graham Nicholson</b>	Westmorland And Furness Council	M T
<b>Graham Underhill</b>	Underhill Tree Consultancy	M T W
<b>Greg Packman</b>	The Royal Parks	M T
<b>Guy Morrison</b>	Enviroscope Consulting	M T
<b>Guy Watson</b>	Certhia Consulting Limited	M T
<b>Harry Ashman</b>	Hill-fort Tree Care Ltd	M
<b>Henry Collings</b>	Property Risk Inspection Ltd	T
<b>Henry Kuppen</b>	Terra Nostra	M T W
<b>Henry Pinn</b>	ACD Environmental	M T
<b>Howard Booth</b>	Transport for London	M T W
<b>Huw Roberts</b>	Vertinetik Limited	M T
<b>Ian Barnes</b>	Tree Diagnostics	M T
<b>Ian Dalton</b>	TEP - The Environment Partnership Limited	M T
<b>Ian May</b>	Rushmoor Borough Council	M T
<b>Ian Monger</b>	Barton Hyett Associates	M T
<b>Ian Thompson</b>	Arbor Cultural Ltd	M T W
<b>Ivan Button</b>	Crown Trees	M T
<b>Jack Burrell</b>	Arb Vision	M T W
<b>Jack Taylor</b>	Woodland Trust	M T
<b>Jacob Strutt</b>	Richmond Council	M T
<b>Jake Duthie</b>	Ligna Consultancy Ltd	T
<b>Jake Mellor</b>	Rammsanderson Ecology Ltd	T
<b>James Allmutt</b>	Tim Moya Associates	M T
<b>James Burton</b>	Royal Borough of Kensington and Chelsea	M T
<b>James Butler-White</b>	Treework Environmental Practice	
<b>James Chambers</b>	Tim Moya Associates	M T W
<b>James Cox</b>	Southern Beeches Ltd	M T
<b>James Gadd</b>	Gadd Brothers Tree and Landscapes	M T
<b>James Gomes</b>	MINT Commercial	T
<b>James Hillier</b>	Hilliers Nurseries	M T
<b>James Percy-Lancaster</b>	Bartlett Tree Experts	M T

Delegate Name	Company	Event Day
<b>James Shaw</b>	Gristwood & Toms Ltd	M T
<b>James Tyson</b>	Cotswold District Council	T
<b>Jamie Pratt</b>	Tyler Grange LLP	T
<b>Jason Hasaka</b>	Bartlett Tree Experts	T
<b>Jasper Fulford-Dobson</b>	Fulford-Dobson Associates Ltd	M T
<b>Jennifer Sinclair</b>	Ligna Consultancy Ltd	T
<b>Jeremy Barrell</b>	Barrell Tree Consultancy	M T W
<b>Jesse Coleman</b>	Kōwhai Treecare	M T W
<b>Jessica Stocks</b>	Royal Borough of Kensington and Chelsea	M T
<b>Jill Butler</b>		M T W
<b>Jill Yeates</b>		M T W
<b>Jim Handley</b>	Grimsthorpe & Drummond Castle Trust	M T W
<b>Jim Stimpson</b>	The Parks Trust	M T
<b>Jim Unwin</b>	B J Unwin Forestry Consultancy	M T
<b>Jo Hedger</b>	Arbor Venture Tree Care	M
<b>Jo Ryan</b>	Consultant	M T
<b>Joe Berryman</b>	Plymouth Communtiy Homes	M T
<b>Joe Codd</b>	Irish Rail	M T
<b>Joe Delarue</b>	Nicholsons Nurseries	M T
<b>Joe Wolf</b>	The Parks Trust	M T
<b>John Booth</b>	John Booth Ltd	M T
<b>John Morgan</b>	Tree Surveyor	M T
<b>John Rose</b>	Treeconomics	M T W
<b>John Trenchard</b>	Arbor Venture Tree Care	M
<b>Jon Hartley</b>	Arbtech Consulting Limited	M
<b>Jon Simpson</b>	Bartlett Tree Experts	T
<b>Jonathan Finlow</b>	The Good Tree Company	T
<b>Jonathan Fulcher</b>	Alderwood Consulting	M T
<b>Jonathan Kennedy</b>	North Tyneside Council	M T W
<b>Joseph Howarth</b>	John O'Conner (GM)	T
<b>Joshua Hood</b>	Hood's Tree Services Ltd	M T W
<b>Joshua Newman</b>	Arb-solute Tree Management Limited	M T
<b>Julia Foster</b>	City of Doncaster Council	
<b>Julian A Morris</b>	JAM Professional Tree Services	M T W

# Delegates

Delegate Name	Company	Event Day
<b>Julian Forbes-Laird</b>	Forbes-Laird Arboricultural Consultancy	T
<b>Julian Montague</b>	Glendale Services	T
<b>Justin Hobbs</b>	Cotswold District Council	M
<b>Kate Ashley</b>	Ashley Tree Surveys	M T
<b>Katerina Hadincova</b>	Barnet Council	M T
<b>Kathleen Wolf</b>	University of Washington	M T W
<b>Keiron Hart</b>	Tamla Trees Ltd	M T
<b>Keith Sacre</b>	Barcham Trees	M T W
<b>Keith Turner</b>	Wolverhampton Tree Services	M T
<b>Kelly Baker</b>	University of Warwick	M T
<b>Ken Ryan</b>	Darwin Tree Specialists Ltd	M T
<b>Ken Sheppard</b>	Tree Maintenance	M T
<b>Kenton Rogers</b>	Treeconomics	M T W
<b>Kevin Frediani</b>	University of Dundee	M T
<b>Kimberley Howard</b>	Tim Moya Associates	M T
<b>Laura Brooker</b>	Mott MacDonald	M T
<b>Laurence Sharp</b>	Nicholsons Nurseries	M T
<b>Lee Cox</b>	Woodland Trust	M T
<b>Lee Davies</b>	Tim Moya Associates	M T
<b>Lee Garner</b>	Tree Assessments UK	M T
<b>Lee Oakley</b>	Barcham Trees plc	M T
<b>Leo Smith</b>	L.Smith Tree Surgery	M T
<b>Lewis Holmes</b>	Green Grid Systems Limited	M T
<b>Liz Launchbury</b>	Alltree Consultancy Ltd	M
<b>Loren Daley</b>	Tim Moya Associates	M
<b>Lotte Dijkstra</b>	Newcastle University	M T W
<b>Louise Simpson</b>	CEO, ICF	M
<b>Lucy Philpott</b>	Tetra Tech	M T
<b>Luke Butler</b>	Butlers Trees	M T
<b>Luke Goldstone</b>	Fountain Treeworks Ltd	M T W
<b>Luke Johnson</b>	Dacorum Borough Council	M T
<b>Lynne Boddy</b>	Cardiff University	T
<b>Marc Wastle</b>	Heritage Tree Services	M T
<b>Marcelo White</b>	London of Borough Islington Council	M T
<b>Marcus Brooke</b>	Marcus Brooke Tree Services	M T W

Delegate Name	Company	Event Day
<b>Mark Ashman</b>	Hill-fort Tree Care Ltd	M
<b>Mark Carter</b>	MJC Tree Services	M T W
<b>Mark Hemming</b>	Bristol City Council	M T W
<b>Mark Hinsley</b>	Mark Hinsley Arboricultural Consultants Limited	M T W
<b>Mark Lloyd</b>	Pear Tree Technology	M T
<b>Mark Stelle</b>	Arbor Stelle	M T W
<b>Mark Townsend</b>	Savills UK (Ltd)	T
<b>Mark Vestey</b>	Sorbus International Ltd	M T
<b>Mark Watson</b>	WSP - Arb & Forestry Consultancy	M T W
<b>Martin Dobson</b>	Martin Dobson Associates	M T
<b>Martin Gammie</b>	Consulting with Trees Ltd	M T
<b>Martin Jenkins</b>	Tree Maintenance	M T
<b>Martin Osman</b>	Chevron Green Services	T
<b>Martin Steele</b>	Aspire Defence Services Limited	M T W
<b>Matt Brown</b>	Tensar International Ltd	T
<b>Matt Levett</b>	Bartlett Tree Experts	M T
<b>Matt Reid</b>	MHP Arboriculture	M T
<b>Matthew Hirons</b>	Oxfordshire County Council	M T
<b>Matthew Jones</b>	MDJ Arboricultural Consultancy Limited	M T
<b>Matthew Norman</b>	Network Rail	M T
<b>Matthew Shute</b>	East Devon Tree Care	M T
<b>Matthew Stuart</b>	Bonny's Wood	M T W
<b>Megan Bedford</b>	Kōwhai Treecare	M T
<b>Menno Kluiters</b>	Dendrologic	M T W
<b>Michael Barker</b>	CSG (Usher's) Ltd	M
<b>Michael Beddow</b>	Beddow Tree Ltd	M T
<b>Michael Birchall</b>	Arbreologie	M T
<b>Michael Lear</b>	Lear Associates Limited	M T W
<b>Michelle Ryan</b>	Transport for London	M T W
<b>Mike Charkow</b>	Arbor Vitae, Consultant	M T W
<b>Mike Higgins</b>	Pembrokeshire Coast National Park Authority	M T W
<b>Mike Kiss</b>	Thompson Tree Services (Midlands) Ltd	M
<b>Mike Lee</b>	Nicholsons	M T
<b>Mike Sanders</b>	ArborFlight	M T
<b>Misho Baxendale</b>	Wildwood Ecology	M

Delegate Name	Company	Event Day
<b>Naomi Charman</b>	Tyler Grange LLP	T
<b>Naomi Zürcher</b>	Arbor Aegis	M T W
<b>Natalie Lambert</b>	Cambridge City Council	M T W
<b>Neil Davies</b>	TR33 Environments	M T
<b>Neil Ford</b>	Natural England	M T
<b>Nicholas Organ</b>	Tree Maintenance	M T
<b>Nick Scally</b>	Treescope Surveys Limited	M
<b>Nobby Clarke</b>	Root and Branch Training	M T W
<b>Noel Nugent</b>	Manchester City Council	M T W
<b>Olivier Dambezat</b>	Ceiba Conseil	T
<b>Olly Kaye</b>	Barton Hyett Associates	M T
<b>Owen Jones</b>		M T
<b>Patrick Neech</b>	Bartlett Tree Experts	M
<b>Patrick Osborne</b>	Green Canopy Consultancy And Tree Care	M
<b>Patrick Prendergast</b>	Bucks Plant Care Ltd	M T
<b>Patrick Stileman</b>	Patrick Stileman Limited Arboricultural Consultancy	M T
<b>Paul Baker</b>	The Parks Trust	M T
<b>Paul Barton</b>	Barton Hyett Associates	M T
<b>Paul Bunce</b>	Saffron Housing Trust	M T
<b>Paul Holly</b>	Holly Arboriculture Ltd	M T W
<b>Paul Jones</b>	TEP - The Environment Partnership Limited	T
<b>Paul O'Hara</b>	Summerfield Books	M T
<b>Paul Roberts</b>	Transport for London	M T
<b>Paul Vongyer</b>	RA Information Systems	M T
<b>Peter Davies</b>	TR33 Ltd	M
<b>Peter Hasted</b>	Thanet Urban Forest	M T W
<b>Peter Holloway</b>	Rootcause Ltd	M T
<b>Peter Jackson</b>	Glendale Services	T
<b>Peter Wharton</b>	Wharton Natural Infrastructure Consultants Ltd	M T
<b>Phil Cowpland</b>	ArborTrack	M T
<b>Phil Swainston</b>	Perennial	M T
<b>Phil Wade</b>	Sorbus International Ltd	M T
<b>Philip Johnson</b>	Professor Shearbomb Ltd	T
<b>Philippe Trouillet</b>	Ceiba Conseil	T
<b>Phillip Brophy</b>	Barrell Tree Consultancy	M T

Delegate Name	Company	Event Day
<b>Phillip Young</b>	Eden Project	M T W
<b>Phillippa Baron</b>	Canal & River Trust	M T W
<b>Quentin Nicholls</b>	Arbortrack Systems Ltd	M T W
<b>Rachel Selwyn</b>	Selwyn Trees	M T
<b>Rebekah Browning</b>	Caerphilly County Borough Council	M T
<b>Reg Harris</b>	Urban Forestry (Bury St. Edmunds)	M T
<b>Ren Delf</b>	Welsh Government	T
<b>Richard Haley</b>	University of Oxford Parks	M T
<b>Richard Hyett</b>	Barton Hyett Associates	M T
<b>Richard Morrish</b>	Richard Morrish Associates Ltd	T
<b>Richard O'shea</b>	The Tree and Woodland Company	T
<b>Richard Trippett</b>	Bartlett Tree Experts	M T
<b>Rob Duffy</b>	Nicholsons Nurseries	M T
<b>Robert McBride</b>		T
<b>Robert Murison</b>	Mercer Tree Services	M T
<b>Robert Penlington</b>	Coventry City Council	M T
<b>Robert Taylor</b>	RA Information Systems	M T
<b>Robert Vowles</b>	Tom Boswell Tree Services Ltd	M T
<b>Roy Partington</b>	Greenfix	M T
<b>Rudi Farghaly</b>	Manchester City Council	M T W
<b>Russell Ball</b>	Arbol Euro Consulting Ltd	M T W
<b>Russell Miller</b>	Russell Miller Arboriculture	M T W
<b>Ruth Baker</b>	Cheshire East Council	M T
<b>Ryan Klein</b>	University Of Florida	M T
<b>Ryan Ollman</b>	Property Risk Inspection Ltd	T
<b>Sally Crudge</b>		M T
<b>Sam Hoar</b>	Hoarticulture Ltd	M T
<b>Samuel Hargreaves</b>	Nicholsons	M T
<b>Samuel Prior</b>	University of Oxford Parks	M T
<b>Sara Brady</b>	Fingal County Council	M T W
<b>Sarah Kiss</b>	Hampshire County Council	M T W
<b>Scott Fairley</b>	West Coast Arboriculture & Land Planning	M T
<b>Scott Fitzgerald</b>	KTF Software	M T
<b>Sean Pursey</b>	Tim Moya Associates	M T W

# Delegates

Delegate Name	Company	Event Day
<b>Sebastian Macleod</b>	WHLandscape	M
<b>Shane Lanigan</b>	Urban Forestry/Abbots Arboricultural Advice Limited	M T W
<b>Sharon Durdant-Hollamby</b>	Tree Lady Talks podcast & Arb Consultant	M T
<b>Shaun Hollis</b>	North West Leicestershire District Council	T
<b>Shaun Phillips</b>	SP Tree Consultancy Limited	M T
<b>Simon Cox</b>	ICAF	M T
<b>Simon Farrimond</b>	Sheffield City Council (Tree And Woodlands Section)	M T
<b>Simon Forster</b>	The Tree Fella NE Ltd	M T W
<b>Simon Gladman</b>	Green Men 4 U	M T
<b>Simon Hawkins</b>	Merewood Arboricultural Consultancy	M
<b>Simon Jones</b>	SJAtrees	M
<b>Simon Stuart</b>	Planning Technical Advisor	M T W
<b>Sophie Morphet</b>	Wakefield Metropolitan District Council	M T W
<b>Stefania Gasperini</b>	Progetto Verde	M T W
<b>Stella Bolam</b>	JCA Limited	M T
<b>Stephen Gilkes</b>	Loughborough University	M T
<b>Stephen Hayden</b>	Hayden Arboricultural Consultants	M T
<b>Stephen Johnson</b>	Fingal County Council	M T W
<b>Stephen O'Reilly</b>	Crown Tree Services	M T W
<b>Steve Calderbank</b>	Nicholsons Nurseries	M T
<b>Steve Cox</b>	Treecall Consulting Limited	M T
<b>Steve Launchbury</b>	Alltree Consultancy Ltd	M T
<b>Steve Westmore</b>	Tree Frontiers	M T
<b>Steven Davis</b>	Atlas Arboriculture	M T
<b>Stuart Roberts</b>	Assured Trees Ltd	T
<b>Stuart Wells</b>	Connick Tree Care	M
<b>Sue Barnes</b>	Tree Diagnostics	M T
<b>Sue Rankine</b>	Hillside Trees Ltd	T
<b>Suzanne Marshall</b>	Kent County Council	M T W
<b>Tamsin Miles</b>	Transport For London	M T
<b>Ted Green</b>		M T W
<b>Terence Crick</b>	Apex Arb Training Ltd	M T W
<b>Therese Casey</b>	Fingal County Council	M T W
<b>Thomas Newbury</b>	Northern Arb Ltd	M

Delegate Name	Company	Event Day
<b>Tim Beckley</b>		M T
<b>Tim Scott-Ellis</b>	Evolve Tree Consultancy	M T W
<b>Tim Wetherhill</b>	Coventry City Council	W
<b>Tom Howells</b>	Surrey County Council	M T
<b>Tom Wigfall</b>	L.Smith Tree Surgery	M T
<b>Tomasz Janovsky</b>	Myerscough College	M T
<b>Tony Kirkham</b>	Vice President, Arboricultural Association	M
<b>Tony Thomas</b>	PB Forestry And Landscaping	M T
<b>Vanessa Lyons</b>	Sheffield City Council (Tree And Woodlands Section)	M T
<b>Wayne Isaacson</b>	Wayne Isaacson Tree Consultancy Ltd	M T
<b>William Anderson</b>	Anderson Tree Care Ltd	M T W
<b>William Byrne</b>	Tim Moya Associates	M T W
<b>William Innes-Taylor</b>	Hilliers Nurseries	M T
<b>William Moore</b>	Atelier De L'arbre	M T W
<b>William Wareing</b>	ACD Environmental	M T

Staff Member	Event Day
<b>Amy Libbiter</b>	M T W
<b>Andrew Stewart</b>	M T
<b>Charlotte Millard</b>	M T
<b>Emma Gilmartin</b>	M T W
<b>Hayley Derrick</b>	M T
<b>Holly Sheldon</b>	M T
<b>Jess Palyfreman</b>	M T
<b>John Parker</b>	M T W
<b>Kate Beamish</b>	M T
<b>Maisey Hammond</b>	M T W
<b>Maran Finn</b>	M T W
<b>Polly Stone</b>	M T
<b>Rosie Curtis</b>	M T W
<b>Sarah Bryce</b>	M T
<b>Sarah Jackson</b>	M T W
<b>Simon Richmond</b>	M T W
<b>Steve Hodsmen</b>	M T W
<b>Tony Lane</b>	M T



# FLAC

**The Seminar. 2024—**

## **FUNGI & VETERAN TREES IN THE PLANNING SYSTEM**

05-07 November, Morley Hayes Estate, Derbyshire

**The Seminar, 2024** is aimed at **ecologists** and **arboriculturists**, and will deliver ca.16hrs of CPD by lecture and field work, across two main strands:

### **1. The Biodiversity Gain Requirements (Irreplaceable Habitat) Regulations 2024:**

- ◆ **The statutory definition of veteran trees** and its relationship to the NPPF
- ◆ Part (iii) of Table 2 in the Schedule—Identifying, surveying for and understanding “specialised” organisms on trees
  - **Fungi** of higher conservation significance
  - **Lichen** epiphytes—the crucial species
  - **Saproxylic invertebrates**: ecology, habitat & conservation
- ◆ **Identifying veteran trees: routes across the minefield**

### **2. Other key aspects of fungi and veteran trees in the planning system**

- ◆ **Waxcap fungi**: indicator species for grassland quality
- ◆ **Fungi of significance to safety**: a concentrated ident. learning programme
- ◆ **Trees & Decay Fungi - A New Approach** (the full version of JFL’s lecture to this year’s Arb. Association Conference)
- ◆ **Veteran tree management & succession plans**: a beneficial side effect of development
- ◆ **Lessons from recent appeal decisions** relating to fungi & veteran trees

**Outdoor study visits to Morley Hayes ASNW and Kedleston Hall park (by kind permission of The National Trust)**

Course leaders:

#### **Julian Forbes-Laird**

BA(Hons), DipGRStud, MICFor, MRSB, MRICS, MEWI, MArborA, Dip Arb(RFS)  
VTA Licensed Lecturer, Karlsruhe Institute of Technology

#### **Ben Abbatt**

BA (Hons), MICFor, MRICS, Cenv, RCarborA, Dip Arb(RFS)  
LANTRA *Professional Tree Inspection* Freelance Instructor

*Register interest by email to [cpdevents@flac.uk.com](mailto:cpdevents@flac.uk.com)*



[www.treediagnostics.co.uk](http://www.treediagnostics.co.uk) - Sales /Training

[www.barnesassociates.co.uk](http://www.barnesassociates.co.uk) - Surveying



## Hi-Tech Tree Investigation Suppliers – Training - Service

Importers for Fakopp, RIMIK and Others – Selling and training consultants in

- Dynaroot – Root Stability
- ArborElectro Impedance Tomograph
- Static Wind Load ‘Tree Pulling’
- ArborSonic 3D Tomograph
- Bluetooth Digital Calipers
- Lugwig sensors
- Bluetooth Microsecond Timer
- RIMIK Cone Penetrometers

## Full Investigation & Tree Surveying Service Available UK wide

Tree Surveying Health & Safety - BS5837 - Tree Radar Root Mapping (GPR) - Drone Surveys  
Subsidence – Thermal Imaging - Large Population surveys – Tree Strategies – Tomography & Stability

Contact – Ian Barnes

01423 322371



07483 116044

# GROUP COURSES AVAILABLE

Upskill Your Team

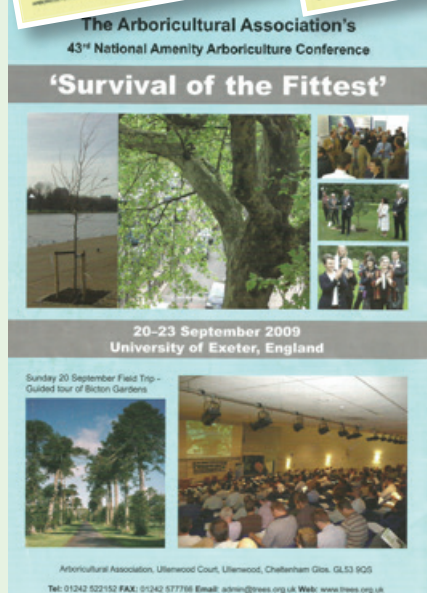
Flexible Training Options

Delivered at the office, local venues  
or via Zoom

See the full list and enquire here: [TREES.ORG.UK/GROUP-COURSES](https://TREES.ORG.UK/GROUP-COURSES)

# Conferences 1967-2024

Year	No.	Location and title (if any)	Year	No.	Location and title (if any)
1967-76	1-10	Merrist Wood College	2001	35	Lancaster, Trees 2001 - A Tree Odyssey
1977	11	Askham Bryan College	2002	36	Cambridge, Trees 2002 - Roots to the Future
1978	12	Details not available	2003	37	Northampton, Trees 2003 - Changing the Future
1979	13	Keele	2004	38	Chester, Arboriculture: A New Awakening
1980	14	Brighton, Trees in the 21st Century	2005	39	Exeter, New Horizons in Arboriculture
1981	15	Askham Bryan, The Roots of Arboriculture	2006	40	York
1982	16	Nottingham, Computer Age Arboriculture	2007	41	Warwick
1983	17	Southampton, 20th Century Tree Care	2008	42	Canterbury
1984	18	Liverpool, Urban Arboriculture	2009	43	Exeter, Survival of the Fittest
1985	19	Loughborough, Trees and People	2010	44	Manchester
1986	20	Bath, Trees in the Landscape	2011	45	Warwick, Looking Beyond the Obvious
1987	21	Keele, Trees and Conservation	2012	46	Reading, Working Together: The Bigger Picture
1988	22	Durham, Contemporary Arboriculture: Conflict or Compromise?	2013	47	Exeter, Managing the Urban Forest
1989	23	Warwick, A Celebration of Trees	2014	48	London (Royal Holloway), Healthy Trees, Healthy People
1990	24	Canterbury, Arboriculture into Europe	2015	49	Warwick, Sustainability and the Urban Forest
1991	25	Stirling, Trees are Green	2016	50	Keele, Planning for the Future
1992	26	Cambridge, From Seed to Senility	2017	51	Exeter, Biosecurity: Protect and Survive
1993	27	Swansea, Trees: A Dinosaur in our Midst	2018	52	Exeter, Soils and Trees: Standing your Ground
1994	28	Nottingham	2019	53	Exeter, Crown & Canopy Management: Working with Nature
1995	29	Lancaster, Can Money Grow on Trees?	2020	-	
1996	30	Exeter, Treecare Technology	2021	54	Held online, Trees & Society
1997	31	Exeter, Arboriculture under Pressure	2022	55	Loughborough, What is a Tree?
1998	32	Stirling, Sustainable Tree Care: The Value of a Growing Asset	2023	56	Warwick
1999	33	Keele, Trees Generations Ahead	2024	57	Warwick
2000	34	Exeter			



# ARBORICULTURAL ASSOCIATION

The home of tree care

Get the latest tree care knowledge



Arboricultural ASSOCIATION

trees.org.uk



## CONFERENCE SPECIAL OFFERS



**FIELD GUIDE FUNGI BUNDLE**  
(OR £12.50 EACH)

ONLY  
**£20**



**FUNGI AND TREES BUNDLE**  
(OR £40 EACH)

ONLY  
**£75**



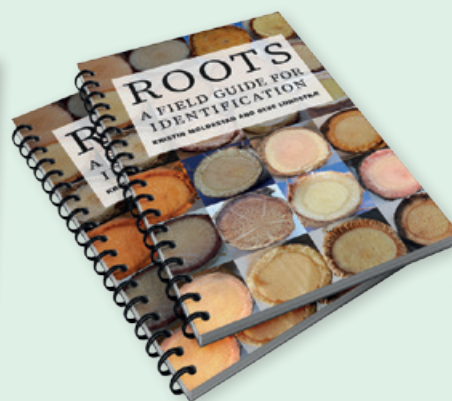
**FULL GUIDANCE NOTE BUNDLE**

ONLY  
**£55**



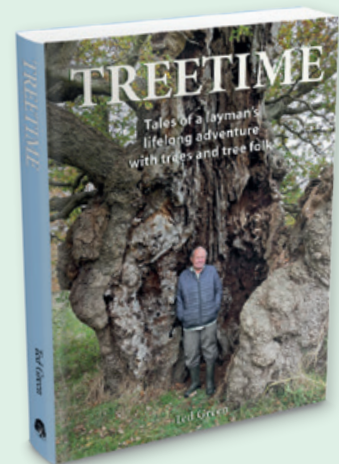
**TREE ROOT DAMAGE TO BUILDINGS BUNDLE**  
(OR £35 EACH)

ONLY  
**£60**



**ROOTS**  
A FIELD GUIDE FOR IDENTIFICATION

ONLY  
**£20**



**TREETIME**  
A LAYMAN'S LIFELONG ADVENTURE WITH TREES AND TREE FOLK

ONLY  
**£20**

...and even more offers at the Arboricultural Association Book Shop  
[TREES.ORG.UK/BOOK-SHOP](https://trees.org.uk/book-shop)