

MANAGING URBAN TREES AND CONTRACTS



Russell Horsey MICFor
Chartered Arboriculturalist
Goetre Villa Ltd

LONDON – STREETS OF GOLD



Highway Risk Management





TREE STORIES



BRISTOLS TREES

- Spreadsheet and laminated maps of Highway Trees
- 3 officers
- 3500 requests for service a year
- Annual Budget – Highways £150K, Parks £36k

EXISTING CONTRACT

- Historic Contract – had been extended and renegotiated!
- Arboricultural Association Approved ?
- Inflexible
- Costly
- Risk Management?



TIME FOR CHANGE

- Feedback from my team
- Officers to go in pairs to Contractor Meetings
- Started to look at our SORs – Line by Line
- Monthly meetings in our Offices
- Do more Inspections, Depot and On-site
- Call outs – repriced
- Big Fells and Grinding

NEW CONTRACT

- EU contract or not an EU contract!
- A year of rewriting our contract
 - Contractor Day rates
 - Call outs
 - Branch removals – dbh
 - Tree Planting
 - Ability to tender outside of main contract
 - Accidents – what to do, who does what

CONTRACT TENDER

- Massive amount of paperwork
- Shadow Bids
- Examples of works
- Waste
- Un-announced site inspections
- Interviews
- Discuss with Procurement and Finance!
- Appointment

ACCIDENTS



ARB ASSOCIATION APPROVED SCHEME

- **Work Site Safety**
- **Work Quality Inspections & Arboricultural Knowledge**
 - On site inspections
 - Arb Technical Knowledge of Manager
- **Customer Care and Office Systems**
 - Complaints
 - Insurances
 - Licenses
 - Bio Security

ARB ASSOCIATION APPROVED SCHEME

- **Health & Safety Management + Workspace
Inspections**
 - **Training and Competence**
 - **Environment**
 - **Stores**
 - **Yard**

PUBLIC PERCEPTION

YOUR TOP LOCAL NEWSPAPER
Bristol Observer Series 167,487
North West: 74,644
July - December 2006

NORTH WEST BRISTOL
OBSERVER

Geophiles

Thursday, March 15, 2007

PART OF THE FAMILY

20p WHERE SOLD

ANGER AS BEAUTIFUL OAK TREE IS FELLED

A ROW has broken out over a 20-year-old oak tree which residents say was needlessly felled.

Tree surgeons from the city council chopped down the oak after the owner of the adjacent house complained it could cause damage to his home.

Residents say the tree, next to the church in Redland Green, was a beautiful piece of greenery which added character to the area.

They claimed the owner of the house - property lawyer Peter Scott, of city firm Bevan Brittan - had used his knowledge of the system to make sure the tree was removed.

The city council said the tree was never meant to be there and that its loss had been offset by other trees planted nearby.

Mr Scott said the tree was self-planted and that there was no other choice but to have it removed.

Bill Ambridge, who has lived in the area for 10 years, said: "I would say that, even if there was a risk, the council should have been brave enough to say that the house comes with a risk."

The other option was for the council to have noted that it was there and reacted if the tree had started to cause any problems.

"But to take it out in advance of anything happening is a real shame. This was a beautiful tree and it is a real kick in the teeth to see that it has gone."

"The council must try much harder to defend trees such as this."

Mr Scott, who has been living in his home for more than 20 years, said he had liaised with Redland and Cotham Amenities Society to see that the tree was replaced.

He said: "This was a self-seeded tree which started growing as a sapling 20 years



A KICK IN THE TEETH: Residents gather around the stump of the tree in Redland Green

Thursday March 8 2007 **Observer**



Leafy future

TREES have been planted in Redland to replace ones affected by disease.

Children from the Redland Green School helped to plant four tulip trees and two hawthorns that have replaced damaged and diseased trees on Redland Green.

In 2006, several horse chestnut trees developed bleeding canker, a disease affecting this species throughout Britain. In addition, a mature tree badly damaged in a storm more than 20 years ago was in a dangerous condition and needed to be cut down.

The tulip trees were funded by the Redland and Cotham Amenities Society (RCAS), and the hawthorns were paid for by Bristol City Council.

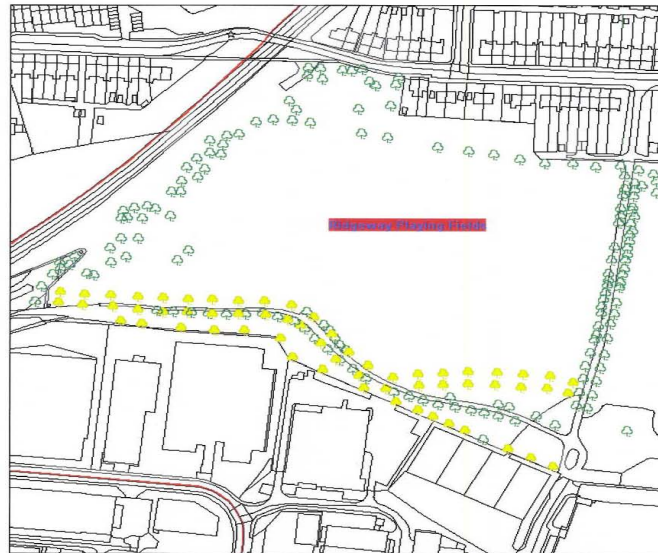
Alison Bromilow, of RCAS, said: "The trees are very important to the local area. The avenue of trees was planted in the 1970s but unfortunately have been affected by this disease. The new trees are nice and big, so we hope they will not be knocked down by stray footballs or anything else."



LAUNCHING TREEBRISTOL.COM



FINAL SPACING DESIGN



This map is reproduced from Ordnance Survey material.
Permission is granted to the Ordnance Survey to publish the
Copyright of the Ordnance Survey in the
© Crown Copyright

Unauthorised reproduction in any form is prohibited.
Any use not permitted by the Ordnance Survey is
prohibited.

As reproduced by the Ordnance Survey Ltd.
Unauthorised reproduction prohibited.

Site: Ridgeway Playing Fields

Subject: tree planting locations (in yellow)

Date: 09/10/09

Parks, Estates and Sport Phone: 0117 922 3719
Colston 33 Fax: 0117 922 3744
Colston Avenue bristolparks@bristol.gov.uk
Bristol BS1 4UA www.bristol.gov.uk/parks

Bristol Parks, Culture and Leisure

PUBLIC INVOLVEMENT



ITS DIFFICULT TO RUN A COMMUNITY EVENT



MANUAL HANDLING



BUSINESS



MARKETING









RESULTS



TEACHERS



REEDLEY ROAD

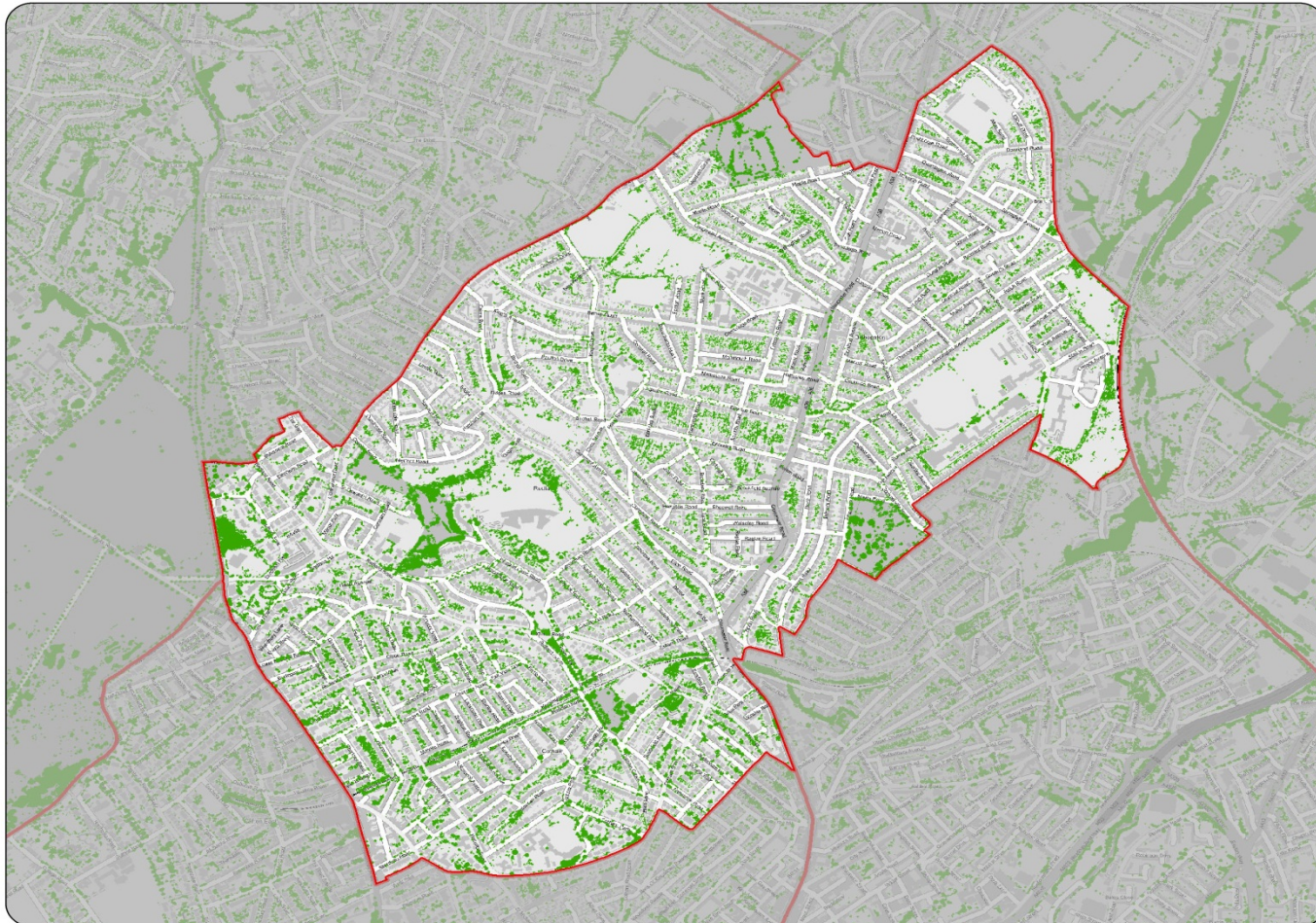


RESOURCE MAPPING





MAPPING AREAS TO PLANT



Bristol City Council
Neighbourhoods
NP06 - Bishopston, Cotham & Redland
NPA Canopy Cover 13%
Citywide Cover 14%

The provision of information by Bristol City Council does not imply a right to reproduce or commercially exploit such information without the Council's express and written permission. Reproduction or commercial exploitation of information provided by the Council without its express permission may be an infringement of copyright.

The council is unable to grant permission to reproduce or to use any material that is the property of third parties. Permission to reproduce or re-use such material must be obtained from the copyright holders.


© Crown Copyright and
database right 2011.
Ordnance Survey 100023406.
ENVIRONMENT & LEISURE

Scale : @A3 1:11,186
Date: 25/10/2011


NEIGHBOURHOODS
DIRECTORATE
Environmental and Leisure Services
Colston 53 Phone: 0117 922 3719
Colston Avenue bristolparks@bristol.gov.uk
Bristol BS1 4UA www.bristol.gov.uk/parks

SEVEN YEARS LATER

13% canopy cover - target of 30%

Bristol Tree Replacement Standard

11 tree and woodland staff

- blueskies

Approx 100,000 trees, 800 acres of woodland

- 10,000 street trees
- 35,000 parks trees
- 15,000 housing open space trees
- 7,000 trees in education sites

Budgets

Annual Spend 10/11 £900k

£120k on Tree Planting Revenue Budgets

- £32k Highways
- £40k Housing
- £51.5k Parks

TreeBristol income on top

Capital Projects

- £500k on tree planting over 2 years

TREES PLANTED

FINANCIAL YEAR	TREES PLANTED
05/06	50
06/07	201
07/08	557
08/09	742
09/10	857
10/11	1200
2011-2015	36,000

PLANT HANDLING



WHERE IS THE MONEY

- Department for Health - £148 billion
- Department for Transport - £20 billion
- Defra - £2.2 billion
 - £60 million on new planting

HIGHWAY CONCERNS



THE £6000 TREE PIT



SUDS



Final

CYCLE CITY AND GBBN



GBBN



PUBLIC SAFETY



CAPITAL PROJECTS





NTOC
National Tree Officers
Conference

Join me at
#TreeOfficerUK

Russell Horsey MICFor
Director
Goetre Villa Ltd

**A practical case study of work carried out at
Bristol City Council**
Session 3: Opportunities & Biosecurity

Tuesday 6 November 2018, Telford

www.charteredforesters.org/tree-officers-conference

